

\$3,250,000 - 270 48 Avenue, Camrose

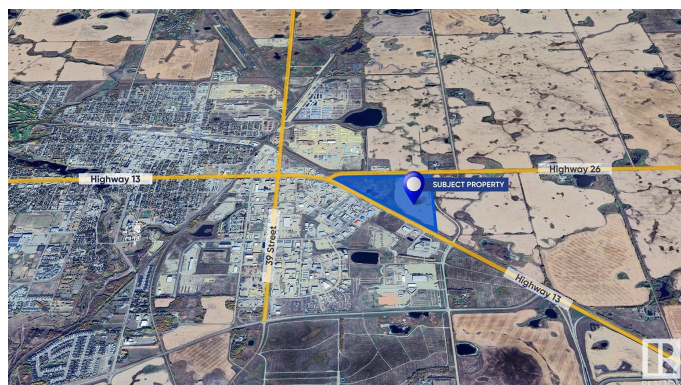
MLS® #E4398101

\$3,250,000

0 Bedroom, 0.00 Bathroom,
Land Commercial on 0.00 Acres

Camrose, Camrose, AB

Located in Camrose, Alberta, this 79.74 Acres (more or less) parcel of industrial land sits strategically between Highway 13 and Highway 26, offering prime accessibility and visibility for businesses. With 79.74 acres (more or less) of land available, there is plenty of room for expansion and customization to suit the needs of businesses of all sizes. M2 Zoning - Heavy Industrial. The city of Camrose offers a supportive business environment, with incentives, resources, and services available to help businesses thrive and grow. The area benefits from excellent infrastructure, including access to utilities, transportation networks, and other essential services, further enhancing its appeal for industrial development. Whether for owner-occupiers or investors, this industrial land represents a sound investment opportunity in a strategic location with strong economic fundamentals and long-term growth prospects.



Essential Information

MLS® #	E4398101
Price	\$3,250,000
Bathrooms	0.00
Acres	0.00
Type	Land Commercial

Status Active

Community Information

Address 270 48 Avenue
Area Camrose
Subdivision Camrose
City Camrose
County ALBERTA
Province AB
Postal Code T4V 4R5

Additional Information

Date Listed July 17th, 2024
Days on Market 276
Zoning Zone 80

DATA IS DEEMED RELIABLE BUT IS NOT GUARANTEED ACCURATE BY THE REALTORS® ASSOCIATION OF EDMONTON. COPYRIGHT 2025 BY THE REALTORS® ASSOCIATION OF EDMONTON. ALL RIGHTS RESERVED.Trademarks are owned or controlled by the Canadian Real Estate Association (CREA) and identify real estate professionals who are members of CREA (REALTOR®, REALTORS®) and/or the quality of services they provide (MLS®, Multiple Listing Service®)
Listing information last updated on April 19th, 2025 at 6:17am MDT