

Courtesy Of Barry D Candelora Of MaxWell Polaris

\$265,000 - 113 10935 21 Avenue, Edmonton

MLS® #E4407704

\$265,000

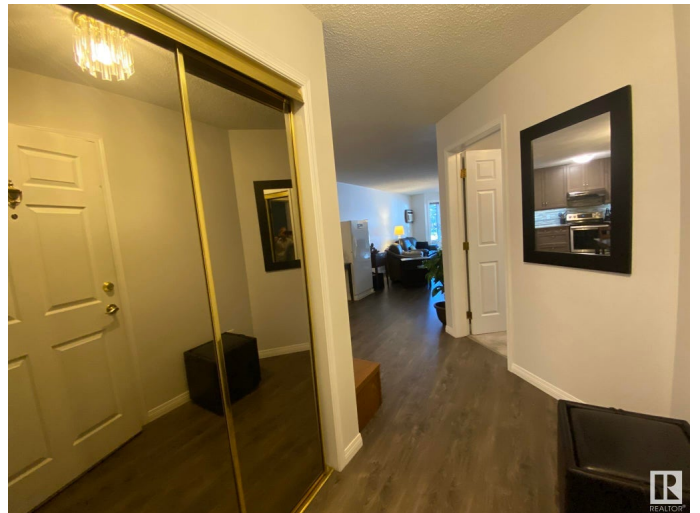
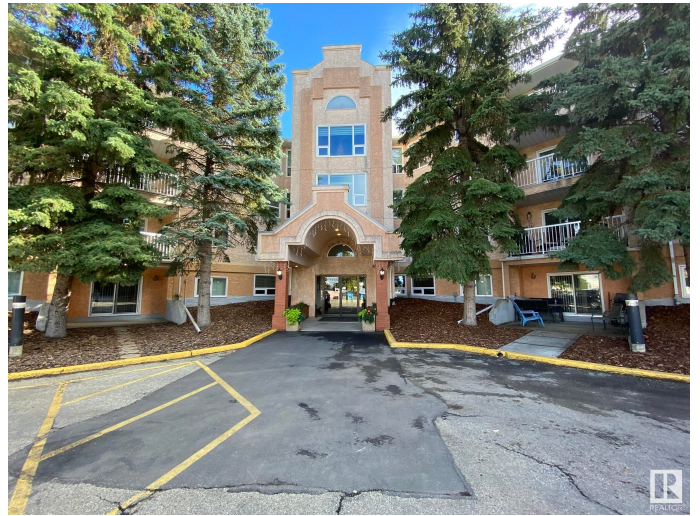
2 Bedroom, 2.00 Bathroom, 1,150 sqft
Condo / Townhouse on 0.00 Acres

Keheewin, Edmonton, AB

Welcome to this 55+ West Facing 2Bdrms/2Full Bath UPGRADED & SECURE MAIN FLOOR Condo with 1150Sq.Ft. of Living Space, 1-Underground #4 STALL in "HERITAGE MANSION EAST!" The unit has newer VINYL PLANK Flooring into the large Living Room w/a BAY WINDOW & HUNTER DOUGLAS BLINDS w/a Lg Dining Room for 6+ Guests & a newly upgraded kitchen with CABINETS TO THE CEILING, GRANITE COUNTER TOPS & BACKSPLASH with UNDERMOUNT LIGHTING & 4-S/S Appliances. The lg Primary Bdrm has space for a King Size Bed w/a WALK-IN CLOSET & a Full 3pc BATH w/a OPEN WALK-IN SHOWER! The Second Bdrm located on the other side of the unit next to the full 4pc Bath. And you have a lg Laundry Room w/a FRONT LOAD WASHER/DRYER with storage space. This Building has newer VINYL WINDOWS, CARPETING, PAINT BALCONIES & RAILINGS along w/an upgraded ELEVATOR. There is a main floor Library, Exercise Room, Craft Room, Top Floor Social Room & A WORKSHOP. Great location with walking to all Medical, Groceries, with ETS & 10min WALK TO THE CENTURY PARK LRT!

Built in 1992

Essential Information



MLS® #	E4407704
Price	\$265,000
Bedrooms	2
Bathrooms	2.00
Full Baths	2
Square Footage	1,150
Acres	0.00
Year Built	1992
Type	Condo / Townhouse
Sub-Type	Lowrise Apartment
Style	Single Level Apartment
Status	Active

Community Information

Address	113 10935 21 Avenue
Area	Edmonton
Subdivision	Keheewin
City	Edmonton
County	ALBERTA
Province	AB
Postal Code	T6J 6R3

Amenities

Amenities	Air Conditioner, Closet Organizers, Detectors Smoke, Hot Water Natural Gas, Intercom, No Animal Home, No Smoking Home, Parking-Visitor, Secured Parking, Security Door, Social Rooms, Storage-In-Suite, Television Connection, Vinyl Windows, Workshop, Storage Cage
Parking Spaces	1
Parking	Front Drive Access, Heated, Shop, Stall, Underground

Interior

Interior Features	ensuite bathroom
Appliances	Air Conditioner-Window, Dishwasher - Energy Star, Dryer, Garage Control, Garburator, Hood Fan, Refrigerator, Stove-Electric, Washer - Energy Star, Window Coverings
Heating	Baseboard, Hot Water, Natural Gas
# of Stories	4
Stories	1
Has Basement	Yes

Basement See Remarks

Exterior

Exterior Wood, Brick, Stucco

Exterior Features Airport Nearby, Backs Onto Park/Trees, Fenced, Flat Site, Fruit Trees/Shrubs, Golf Nearby, Landscaped, Playground Nearby, Private Setting, Public Swimming Pool, Public Transportation, Schools, Shopping Nearby, Ski Hill Nearby, Treed Lot

Roof Asphalt Shingles

Construction Wood, Brick, Stucco

Foundation Concrete Perimeter

School Information

Elementary KEHEEWIN/St.THERESA!

Middle D.S.MAC/VERON B!

High H.AINLAY/LS.LAUR!

Additional Information

Date Listed September 24th, 2024

Days on Market 169

Zoning Zone 16

Condo Fee \$628

DATA IS DEEMED RELIABLE BUT IS NOT GUARANTEED ACCURATE BY THE REALTORS® ASSOCIATION OF EDMONTON. COPYRIGHT 2025 BY THE REALTORS® ASSOCIATION OF EDMONTON. ALL RIGHTS RESERVED. Trademarks are owned or controlled by the Canadian Real Estate Association (CREA) and identify real estate professionals who are members of CREA (REALTOR®, REALTORS®) and/or the quality of services they provide (MLS®, Multiple Listing Service®)

Listing information last updated on March 12th, 2025 at 7:02pm MDT