

Courtesy Of Jeff D Jackson Of Bode

# \$549,900 - 519 30 Avenue, Edmonton

MLS® #E4412846

**\$549,900**

4 Bedroom, 2.50 Bathroom, 1,626 sqft  
Single Family on 0.00 Acres

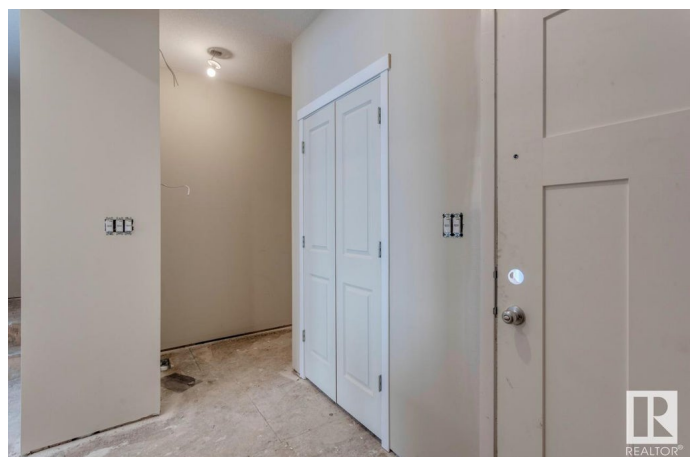
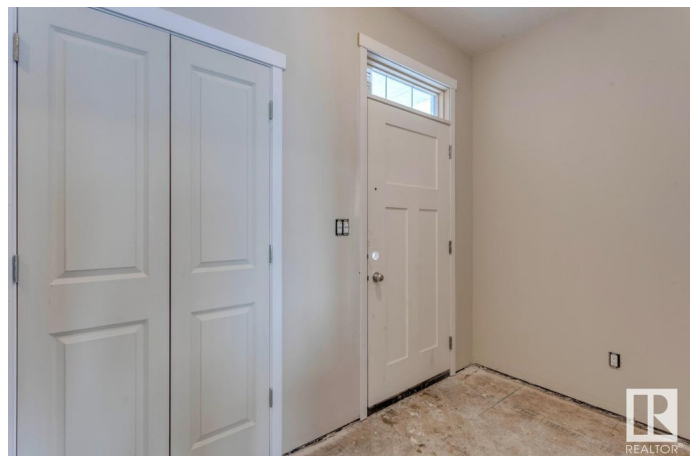
Maple Crest, Edmonton, AB

Welcome to the Michela 2 by Hopewell Residential, a stunning 4-bedroom, 2.5-bath, two-story home with a double attached garage and a spacious, south-facing backyard. This modern home features a 9' foundation height, an exterior gas line ready for future BBQs, and a secondary entrance for added convenience. The main floor showcases elegant spindle railing and an expansive kitchen with a large island, quartz countertops, and stainless steel appliances, perfect for cooking and entertaining. All 4 bedrooms are located upstairs, offering privacy and ample space for the entire family. Photos are representative.

Built in 2024

## Essential Information

MLS® #	E4412846
Price	\$549,900
Bedrooms	4
Bathrooms	2.50
Full Baths	2
Half Baths	1
Square Footage	1,626
Acres	0.00
Year Built	2024
Type	Single Family
Sub-Type	Detached Single Family



Style	2 Storey
Status	Active

### Community Information

Address	519 30 Avenue
Area	Edmonton
Subdivision	Maple Crest
City	Edmonton
County	ALBERTA
Province	AB
Postal Code	T5Y 6C4

### Amenities

Amenities	Ceiling 9 ft., No Animal Home, No Smoking Home, See Remarks
Parking Spaces	4
Parking	Double Garage Attached

### Interior

Interior Features	ensuite bathroom
Appliances	Dishwasher-Built-In, Microwave Hood Fan, Refrigerator, Stove-Electric
Heating	Forced Air-1, Natural Gas
Stories	2
Has Basement	Yes
Basement	Full, Unfinished

### Exterior

Exterior	Wood, Stone, Vinyl
Exterior Features	Park/Reserve, Playground Nearby, Schools, Shopping Nearby
Roof	Asphalt Shingles
Construction	Wood, Stone, Vinyl
Foundation	Concrete Perimeter

### Additional Information

Date Listed	November 6th, 2024
Days on Market	126
Zoning	Zone 30

DATA IS DEEMED RELIABLE BUT IS NOT GUARANTEED ACCURATE BY THE REALTORS® ASSOCIATION OF EDMONTON. COPYRIGHT 2025 BY THE REALTORS® ASSOCIATION OF EDMONTON. ALL RIGHTS RESERVED. Trademarks are owned or controlled by the Canadian Real Estate Association (CREA) and identify real estate professionals who are members of CREA (REALTOR®, REALTORS®) and/or the quality of services they

provide (MLS® , Multiple Listing Service®)

Listing information last updated on March 12th, 2025 at 7:17pm MDT