

# \$456,000 - 23219 On Twp 554 A 1/2 Mile West Of Hwy 28a, Gibbons

MLS® #E4412916

**\$456,000**

0 Bedroom, 0.00 Bathroom,  
Land Commercial on 0.00 Acres

None, Gibbons, AB

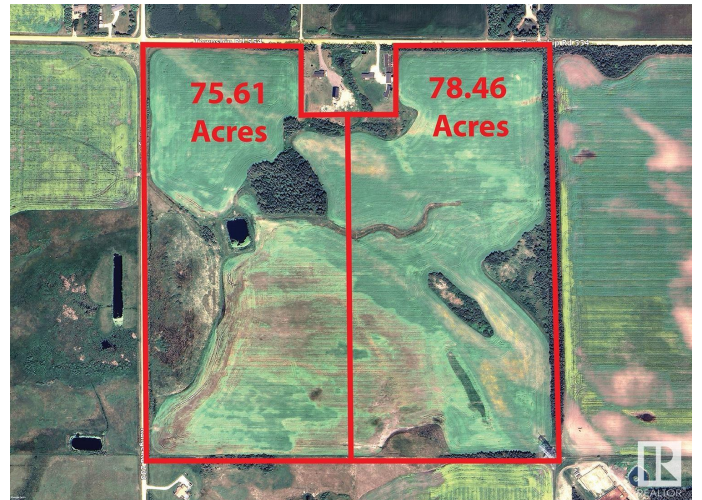
The Land is made up of 2 parcels: West:  
75.61 Acres: \$439,000 East: 78.46 Acres:  
\$456,000 TOTAL: 154.07Acres for \$895,000  
Features: - Note: these parcels may be  
purchased separately or both together. -Inside  
Edmonton-Gibbons Land Corridor ! -Close to  
Industrial Heartland and Edmonton. Great for  
Country Residential Estate or Hobby Farm  
Development or add to existing farm holdings !  
-1/2 mile from Major Highway between  
Edmonton and Fort McMurray !! -Great Road  
Access from all directions !

## Essential Information

MLS® #	E4412916
Price	\$456,000
Bathrooms	0.00
Acres	0.00
Type	Land Commercial
Status	Active

## Community Information

Address	23219 On Twp 554 A 1/2 Mile
Area	Gibbons
Subdivision	None
City	Gibbons



County	ALBERTA
Province	AB
Postal Code	T0A 1N0

**Additional Information**

Date Listed	November 6th, 2024
Days on Market	161
Zoning	Zone 60

DATA IS DEEMED RELIABLE BUT IS NOT GUARANTEED ACCURATE BY THE REALTORS® ASSOCIATION OF EDMONTON. COPYRIGHT 2025 BY THE REALTORS® ASSOCIATION OF EDMONTON. ALL RIGHTS RESERVED.Trademarks are owned or controlled by the Canadian Real Estate Association (CREA) and identify real estate professionals who are members of CREA (REALTOR®, REALTORS®) and/or the quality of services they provide (MLS®, Multiple Listing Service®)

Listing information last updated on April 16th, 2025 at 12:02pm MDT