

Courtesy Of Mani Bagga and Shivani Bagga Of Royal Lepage Magna

\$1,368,800 - 5819 28 Street, Rural Leduc County

MLS® #E4415093

\$1,368,800

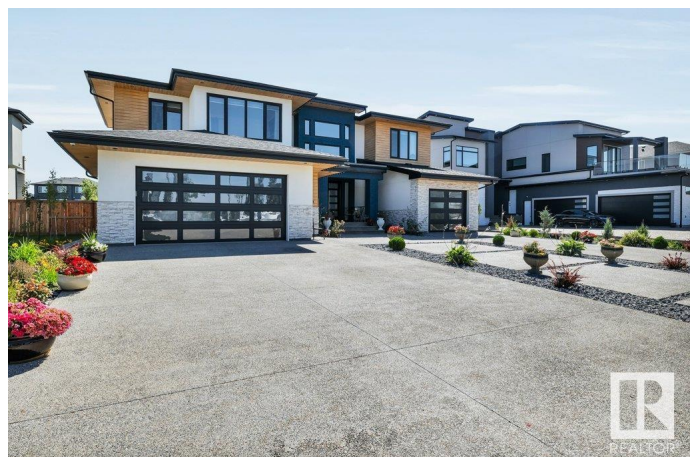
6 Bedroom, 4.50 Bathroom, 3,566 sqft

Rural on 0.33 Acres

Diamond Estates_LEDU, Rural Leduc County,
AB

Welcome to Diamond Estates in Leduc County! This MAGNIFICENT MANSION on a 0.33 acre lot is a work of art! Boasting a total living space of over 3565 sqft + over 1539 sqft of FULLY FINISHED BASEMENT, 7 FIREPLACES, 6 BDRMS, 4.5 baths, & 2 STEAM SHOWERS, this home sits you in the lap of luxury! The large foyer brings you into MODERN OPULENCE w/ a GRAND LIVING ROOM w/ a ONE-OF-A-KIND GAS FIREPLACE OVERLOOKING the HOLLYWOOD-type BACKYARD lined w/ POPLAR TREES plus a LARGE PATIO, & A PARADE OF BUILT-IN NIGHT LIGHTS, a spacious dining area w/ 20 ft CEILINGS above & a DREAM ISLAND KITCHEN W/ HIGH-END SS APPLIANCES w/ a DOWNDRAFT COUNTERTOP GAS STOVE, a BUILT-IN COFFEE MAKER & MICROWAVE OVEN, BRAZILIAN QUARTZ COUNTERTOPS, WALK-IN PANTRY & MODERN CABINETRY! A spreadout MUDROOM, OFFICE & 2-pc BATH completes the main floor elysium! Upstairs offers w/ 3 large bdrms overlooking the GREEN VIEW, 3 full baths, w/ 2 ENSUITES, BONUS RM, BAR, DEN & LAUNDRY RM! The BSMT offers 3 BDRMS, 3-pc Bath, 2ND LAUNDRY RM, REC RM & BAR !

Built in 2017



Essential Information

MLS® #	E4415093
Price	\$1,368,800
Bedrooms	6
Bathrooms	4.50
Full Baths	4
Half Baths	1
Square Footage	3,566
Acres	0.33
Year Built	2017
Type	Rural
Sub-Type	Detached Single Family
Style	2 Storey
Status	Active

Community Information

Address	5819 28 Street
Area	Rural Leduc County
Subdivision	Diamond Estates_LEDU
City	Rural Leduc County
County	ALBERTA
Province	AB
Postal Code	T4X 0X5

Amenities

Features	Bar, Ceiling 10 ft., Closet Organizers, Deck, Fire Pit, Front Porch, Patio, Wet Bar, See Remarks
Parking Spaces	7

Interior

Interior Features	ensuite bathroom
Heating	Forced Air-2, Natural Gas
Fireplace	Yes
Stories	3
Has Basement	Yes
Basement	Full, Finished

Exterior

Exterior	Wood
----------	------

Exterior Features Airport Nearby, Fenced, Flat Site, Fruit Trees/Shrubs, Landscaped, Park/Reserve, Playground Nearby, Shopping Nearby, See Remarks
Construction Wood
Foundation Concrete Perimeter

Additional Information

Date Listed December 2nd, 2024
Days on Market 102
Zoning Zone 80

DATA IS DEEMED RELIABLE BUT IS NOT GUARANTEED ACCURATE BY THE REALTORS® ASSOCIATION OF EDMONTON. COPYRIGHT 2025 BY THE REALTORS® ASSOCIATION OF EDMONTON. ALL RIGHTS RESERVED. Trademarks are owned or controlled by the Canadian Real Estate Association (CREA) and identify real estate professionals who are members of CREA (REALTOR®, REALTORS®) and/or the quality of services they provide (MLS®, Multiple Listing Service®)
Listing information last updated on March 13th, 2025 at 11:32pm MDT