

Courtesy Of Mathew T Haupt and Dane Phaneuf Of Exp Realty

# \$1,938,000 - 5106 Woolsey Link, Edmonton

MLS® #E4416563

**\$1,938,000**

6 Bedroom, 5.50 Bathroom, 3,984 sqft

Single Family on 0.00 Acres

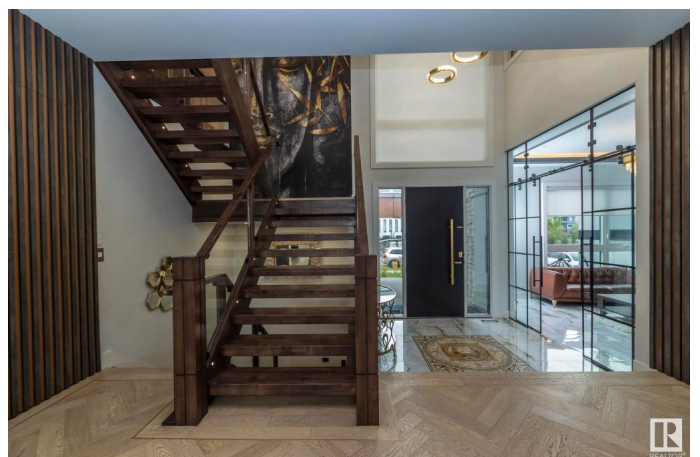
Windermere, Edmonton, AB

Welcome to Westpointe in Windermere, where this stunning Contemporary Custom Mansion offers over +/-5,700 square feet of luxurious living. Inside, you'll find 6 spacious bedrooms, including dual master suites with walk-in closets and exquisite 5-piece ensuites featuring custom 8-foot showers. One master suite also includes a private balcony with serene pond views and a feature fireplace wall. This home boasts 6 beautifully designed bathrooms, including one in the fully finished basement, complete with a jacuzzi and steam shower. High-end finishes are everywhere: Kentwood hardwood floors, Reibel gold plumbing fixtures, Versace tiles, 8-foot walnut veneer custom doors, and Dekton countertops throughout. Other notable features include screwless metallic grey switches, a powerful 5-ton A/C unit, and heated flooring across the main floor, basement, and triple garage. Maple 8-foot posts with glass rails add a sophisticated touch. Outside, a heated driveway ensures comfort and convenience.

Built in 2022

## Essential Information

MLS® #	E4416563
Price	\$1,938,000
Bedrooms	6



Bathrooms	5.50
Full Baths	5
Half Baths	1
Square Footage	3,984
Acres	0.00
Year Built	2022
Type	Single Family
Sub-Type	Detached Single Family
Style	2 Storey
Status	Active

### **Community Information**

Address	5106 Woolsey Link
Area	Edmonton
Subdivision	Windermere
City	Edmonton
County	ALBERTA
Province	AB
Postal Code	T6W 2E1

### **Amenities**

Amenities	Air Conditioner, Bar, Ceiling 10 ft., Hot Wtr Tank-Energy Star, Smart/Program. Thermostat, Recreation Room/Centre, Secured Parking, Wet Bar
Parking	Triple Garage Attached

### **Interior**

Interior Features	ensuite bathroom
Appliances	Dryer, Hood Fan, Stove-Gas, Washer, Wine/Beverage Cooler, Refrigerators-Two, Dishwasher-Two
Heating	Forced Air-1, Natural Gas
Stories	3
Has Basement	Yes
Basement	Full, Finished

### **Exterior**

Exterior	Wood, Stone, Stucco
Exterior Features	Schools, Shopping Nearby, See Remarks
Roof	Asphalt Shingles

Construction	Wood, Stone, Stucco
Foundation	Concrete Perimeter

### **School Information**

Elementary	Constable Daniel Woodall
Middle	Riverbend School
High	Lillian Osbourne H. School

### **Additional Information**

Date Listed	December 23rd, 2024
Days on Market	81
Zoning	Zone 56
HOA Fees	525
HOA Fees Freq.	Annually

DATA IS DEEMED RELIABLE BUT IS NOT GUARANTEED ACCURATE BY THE REALTORS® ASSOCIATION OF EDMONTON. COPYRIGHT 2025 BY THE REALTORS® ASSOCIATION OF EDMONTON. ALL RIGHTS RESERVED. Trademarks are owned or controlled by the Canadian Real Estate Association (CREA) and identify real estate professionals who are members of CREA (REALTOR®, REALTORS®) and/or the quality of services they provide (MLS®, Multiple Listing Service®)

Listing information last updated on March 14th, 2025 at 12:02am MDT