

\$825,000 - 8323 Saskatchewan Drive, Edmonton

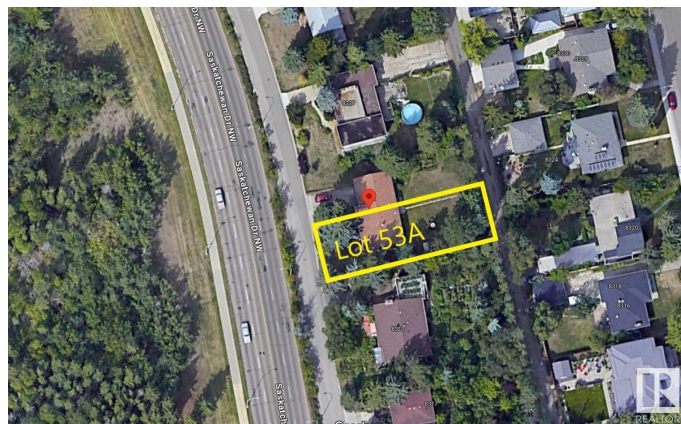
MLS® #E4416788

\$825,000

0 Bedroom, 0.00 Bathroom,
Single Family on 0.00 Acres

Windsor Park (Edmonton), Edmonton, AB

Fantastic RIVER VALLEY VIEW! Outstanding building site in the desired community of Windsor Park. This 50â€™™x142â€™™ lot with full services, flat and ready for development. It is located just off the prestigious Saskatchewan Drive. Multiple Options for development â€“ The 50â€™™ frontage allow subdividing for two homes or building your luxury dream home with 3rd-floor rooftop patio overlooking the Saskatchewan River. Steps away from the University of Alberta, University Hospital & Edmonton's River Valley.



Essential Information

MLS® #	E4416788
Price	\$825,000
Bathrooms	0.00
Acres	0.00
Type	Single Family
Sub-Type	Vacant Lot/Land
Status	Active

Community Information

Address	8323 Saskatchewan Drive
Area	Edmonton
Subdivision	Windsor Park (Edmonton)
City	Edmonton
County	ALBERTA

Province AB
Postal Code T6G 2A7

Exterior

Exterior Features Fenced

Additional Information

Date Listed January 1st, 2025

Days on Market 102

Zoning Zone 15

DATA IS DEEMED RELIABLE BUT IS NOT GUARANTEED ACCURATE BY THE REALTORS® ASSOCIATION OF EDMONTON. COPYRIGHT 2025 BY THE REALTORS® ASSOCIATION OF EDMONTON. ALL RIGHTS RESERVED. Trademarks are owned or controlled by the Canadian Real Estate Association (CREA) and identify real estate professionals who are members of CREA (REALTOR®, REALTORS®) and/or the quality of services they provide (MLS®, Multiple Listing Service®)

Listing information last updated on April 13th, 2025 at 1:32am MDT