

Courtesy Of Jennifer M Bashow Of Exp Realty

\$310,000 - 5941 189 Street, Edmonton

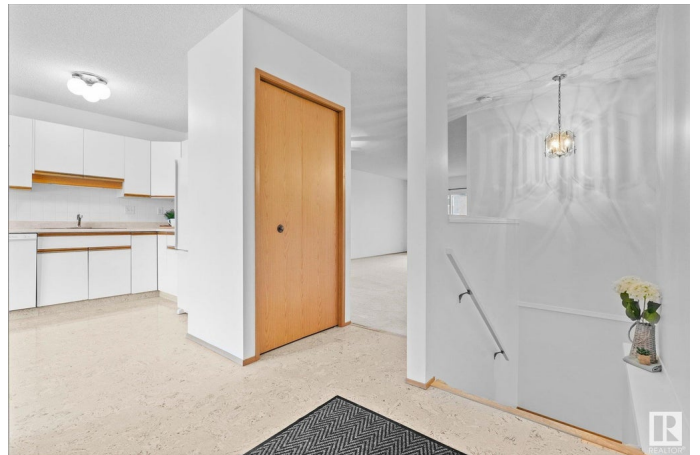
MLS® #E4418816

\$310,000

3 Bedroom, 2.50 Bathroom, 1,129 sqft
Condo / Townhouse on 0.00 Acres

Jamieson Place, Edmonton, AB

Dreaming of an easier, low-maintenance lifestyle in a 45+ community? Youâ€™re going to LOVE this one! Amberwood Village in Jamieson is an absolute GEM, and this half-duplexâ€™tucked away in a quiet spotâ€™wonâ€™t last long! Itâ€™s been lovingly cared for, with a fresh, neutral color palette so you can move right in. The BRIGHT, spacious kitchen has tons of cabinets and spaceâ€™perfect for your morning coffee! The open-concept living/dining area? Amazing for entertaining! Step out onto one of the biggest decks in the complex and soak up the summer vibes! Your primary suite is GREAT, with loads of closet space and a fantastic ensuite. A second bedroom and full bath with a walk-in tub complete the main floor. But waitâ€™thereâ€™s MORE! The fully finished basement has another bedroom, full bath, family room, craft space, and laundryâ€™ideal for guests or hobbies! Plus, youâ€™re close to shopping, parks, and the Henday for ultimate convenience. Oh, and a single attached garage? Yep, thatâ€™s included too! Condo 45+ until Dec 31,32.



Built in 1989

Essential Information

MLS® #	E4418816
Price	\$310,000

Bedrooms	3
Bathrooms	2.50
Full Baths	2
Half Baths	1
Square Footage	1,129
Acres	0.00
Year Built	1989
Type	Condo / Townhouse
Sub-Type	Townhouse
Style	Bungalow
Status	Active

Community Information

Address	5941 189 Street
Area	Edmonton
Subdivision	Jamieson Place
City	Edmonton
County	ALBERTA
Province	AB
Postal Code	T6M 2J2

Amenities

Amenities	No Smoking Home, Parking-Visitor
Parking	Single Garage Attached

Interior

Interior Features	ensuite bathroom
Appliances	Dishwasher-Built-In, Dryer, Fan-Ceiling, Garage Control, Garage Opener, Hood Fan, Oven-Microwave, Stove-Electric, Washer, Window Coverings, Refrigerators-Two
Heating	Forced Air-1, Natural Gas
Stories	2
Has Basement	Yes
Basement	Full, Finished

Exterior

Exterior	Wood, Stucco
Exterior Features	Flat Site, Golf Nearby, Private Setting, See Remarks
Roof	Asphalt Shingles

Construction	Wood, Stucco
Foundation	Concrete Perimeter

Additional Information

Date Listed	January 22nd, 2025
Days on Market	86
Zoning	Zone 20
Condo Fee	\$485

DATA IS DEEMED RELIABLE BUT IS NOT GUARANTEED ACCURATE BY THE REALTORS® ASSOCIATION OF EDMONTON. COPYRIGHT 2025 BY THE REALTORS® ASSOCIATION OF EDMONTON. ALL RIGHTS RESERVED. Trademarks are owned or controlled by the Canadian Real Estate Association (CREA) and identify real estate professionals who are members of CREA (REALTOR®, REALTORS®) and/or the quality of services they provide (MLS®, Multiple Listing Service®)

Listing information last updated on April 18th, 2025 at 2:32pm MDT