

Courtesy Of Thomas J Lowe Of RE/MAX Edge Realty

\$614,900 - 2 Woodbridge Link, Fort Saskatchewan

MLS® #E4422270

\$614,900

5 Bedroom, 3.50 Bathroom, 1,938 sqft
Single Family on 0.00 Acres

Westpark_FSAS, Fort Saskatchewan, AB

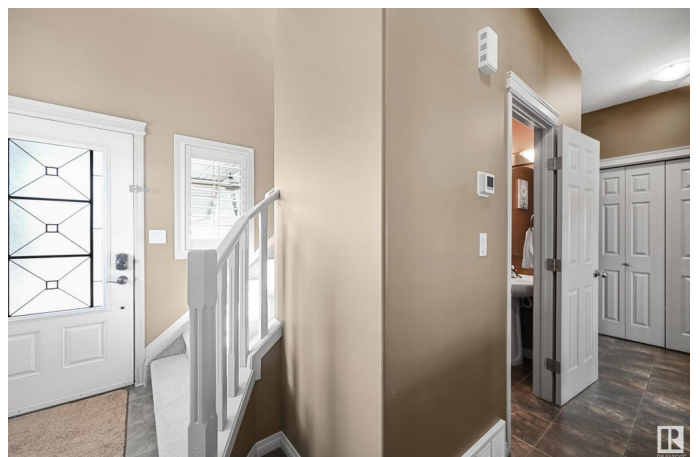
Welcome to this exceptional 1,938 sq. ft. home, situated on a sought-after corner lot in the prestigious Westpark community of Fort Saskatchewan. This immaculately maintained property offers five spacious bedrooms including a large primary bedroom and three and a half bathrooms and including an en-suite with double sinks. The fully finished basement adds extra living space, perfect for a home theater, gym, or recreation area. The home features a double attached 30 foot deep tandem heated garage, offering plenty of space for multiple vehicles as well as additional storage. Stay comfortable year-round with the added benefit of central air conditioning. Outside, the professionally landscaped yard provides a beautiful and tranquil environment, ideal for family gatherings or quiet relaxation. Being located on a corner lot, the property enjoys enhanced privacy and an abundance of natural light. This home combines luxury and functionality with a modern open layout and high-quality finishes throughout.

Built in 2009

Essential Information

MLS® # E4422270

Price \$614,900



| | |
|----------------|------------------------|
| Bedrooms | 5 |
| Bathrooms | 3.50 |
| Full Baths | 3 |
| Half Baths | 1 |
| Square Footage | 1,938 |
| Acres | 0.00 |
| Year Built | 2009 |
| Type | Single Family |
| Sub-Type | Detached Single Family |
| Style | 2 Storey |
| Status | Active |

Community Information

| | |
|-------------|-------------------|
| Address | 2 Woodbridge Link |
| Area | Fort Saskatchewan |
| Subdivision | Westpark_FSAS |
| City | Fort Saskatchewan |
| County | ALBERTA |
| Province | AB |
| Postal Code | T8L 0H1 |

Amenities

| | |
|----------------|---|
| Amenities | Air Conditioner, Deck, Exterior Walls- 2"x6", Front Porch, No Animal Home, No Smoking Home, Vinyl Windows |
| Parking Spaces | 4 |
| Parking | Double Garage Attached, Tandem |

Interior

| | |
|-------------------|--|
| Interior Features | ensuite bathroom |
| Appliances | Air Conditioning-Central, Dishwasher-Built-In, Dryer, Garage Control, Garage Opener, Microwave Hood Fan, Refrigerator, Storage Shed, Stove-Gas, Vacuum System Attachments, Washer, Window Coverings, Garage Heater |
| Heating | Forced Air-1, Natural Gas |
| Fireplace | Yes |
| Fireplaces | Tile Surround |
| Stories | 3 |
| Has Basement | Yes |
| Basement | Full, Finished |

Exterior

| | |
|-------------------|--|
| Exterior | Wood, Brick, Vinyl |
| Exterior Features | Corner Lot, Fenced, Flat Site, Fruit Trees/Shrubs, Golf Nearby, Landscaped, Level Land, No Back Lane, Picnic Area, Playground Nearby, Schools, Shopping Nearby |
| Roof | Asphalt Shingles |
| Construction | Wood, Brick, Vinyl |
| Foundation | Concrete Perimeter |

Additional Information

| | |
|----------------|---------------------|
| Date Listed | February 20th, 2025 |
| Days on Market | 59 |
| Zoning | Zone 62 |

DATA IS DEEMED RELIABLE BUT IS NOT GUARANTEED ACCURATE BY THE REALTORS® ASSOCIATION OF EDMONTON. COPYRIGHT 2025 BY THE REALTORS® ASSOCIATION OF EDMONTON. ALL RIGHTS RESERVED. Trademarks are owned or controlled by the Canadian Real Estate Association (CREA) and identify real estate professionals who are members of CREA (REALTOR®, REALTORS®) and/or the quality of services they provide (MLS®, Multiple Listing Service®)

Listing information last updated on April 20th, 2025 at 1:17am MDT