

# \$295,000 - 401 501 Palisades Way, Sherwood Park

MLS® #E4424107

**\$295,000**

2 Bedroom, 2.00 Bathroom, 1,032 sqft  
Condo / Townhouse on 0.00 Acres

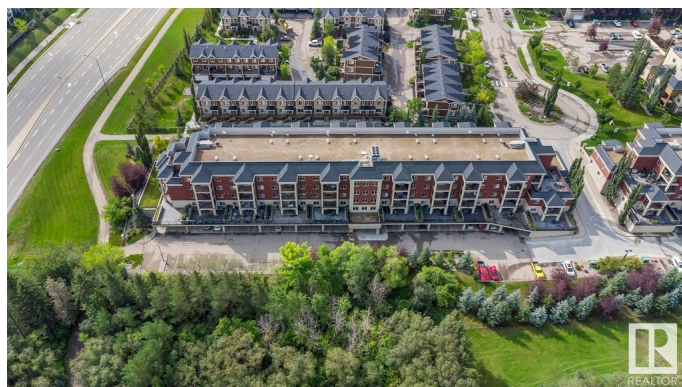
Centennial Village, Sherwood Park, AB

BEAUTIFULLY UPDATED in Palisades on the Ravine featuring AC, 2 bedrooms, 2 baths, UNDERGROUND, HEATED PARKING & gorgeous VIEWS! You will LOVE the refreshed kitchen with white cabinets, open shelving, stainless steel appliances, walk in pantry & peninsula island that over looks the dining area & living room with laminate flooring & access to the patio. The new flooring is continued through to the primary suite with walk through closet & 3pc ensuite. 2nd bedroom is also generous in size. 4pc bath, in-suite laundry & den compliment the functional layout. You will LOVE the amenities including exercise room on main level & social room with wet bar & pool table in the 500 building. RELAX on the patio that over looks Centennial Park. Nothing to do here but move in and enjoy condo living at it's finest with condo fees that include HEAT & WATER in this PET FRIENDLY, 18+ building, that is steps away from parks, trails, shopping & Millennium Place.

Built in 2008

## Essential Information

|          |           |
|----------|-----------|
| MLS® #   | E4424107  |
| Price    | \$295,000 |
| Bedrooms | 2         |



|                |                        |
|----------------|------------------------|
| Bathrooms      | 2.00                   |
| Full Baths     | 2                      |
| Square Footage | 1,032                  |
| Acres          | 0.00                   |
| Year Built     | 2008                   |
| Type           | Condo / Townhouse      |
| Sub-Type       | Lowrise Apartment      |
| Style          | Single Level Apartment |
| Status         | Active                 |

### **Community Information**

|             |                       |
|-------------|-----------------------|
| Address     | 401 501 Palisades Way |
| Area        | Sherwood Park         |
| Subdivision | Centennial Village    |
| City        | Sherwood Park         |
| County      | ALBERTA               |
| Province    | AB                    |
| Postal Code | T8H 0H8               |

### **Amenities**

|           |   |
|-----------|---|
| Amenities | Air Conditioner, Ceiling 9 ft., Exercise Room, Patio, See Remarks, Natural Gas BBQ Hookup |
| Parking   | Heated, Underground   |

### **Interior**

|                   |  |
|-------------------|--|
| Interior Features | ensuite bathroom   |
| Appliances        | Dishwasher-Built-In, Dryer, Microwave Hood Fan, Refrigerator, Stove-Electric, Washer |
| Heating           | Fan Coil, Natural Gas  |
| # of Stories      | 4  |
| Stories           | 1  |
| Has Basement      | Yes  |
| Basement          | None, No Basement  |

### **Exterior**

|                   |  |
|-------------------|--|
| Exterior          | Concrete, Brick, Stucco  |
| Exterior Features | Landscaped, Playground Nearby, Private Setting, Public Transportation, Schools, Shopping Nearby, See Remarks |
| Roof              | Tar & Gravel   |

|              |                         |
|--------------|-------------------------|
| Construction | Concrete, Brick, Stucco |
| Foundation   | Concrete Perimeter      |

### **Additional Information**

|                |                 |
|----------------|-----------------|
| Date Listed    | March 5th, 2025 |
| Days on Market | 37              |
| Zoning         | Zone 25         |
| Condo Fee      | \$612           |

DATA IS DEEMED RELIABLE BUT IS NOT GUARANTEED ACCURATE BY THE REALTORS® ASSOCIATION OF EDMONTON. COPYRIGHT 2025 BY THE REALTORS® ASSOCIATION OF EDMONTON. ALL RIGHTS RESERVED. Trademarks are owned or controlled by the Canadian Real Estate Association (CREA) and identify real estate professionals who are members of CREA (REALTOR®, REALTORS®) and/or the quality of services they provide (MLS®, Multiple Listing Service®)

Listing information last updated on April 11th, 2025 at 12:17am MDT