

\$249,900 - N/A, Spruce Grove

MLS® #E4425124

\$249,900

0 Bedroom, 0.00 Bathroom,
Business on 0.00 Acres

East Campsite Business Park, Spruce Grove,

Profitable Pizza store for sale in prime location!!!.This store is perfectly situated in a high traffic with great visibility. Restaurant is almost 1199 Sq ft featuring in good condition equipment and ready for quick possession for immediate operation. Ideal for new and experienced owners to acquire a turnkey, high potential opportunity. Don't miss out!!

Essential Information

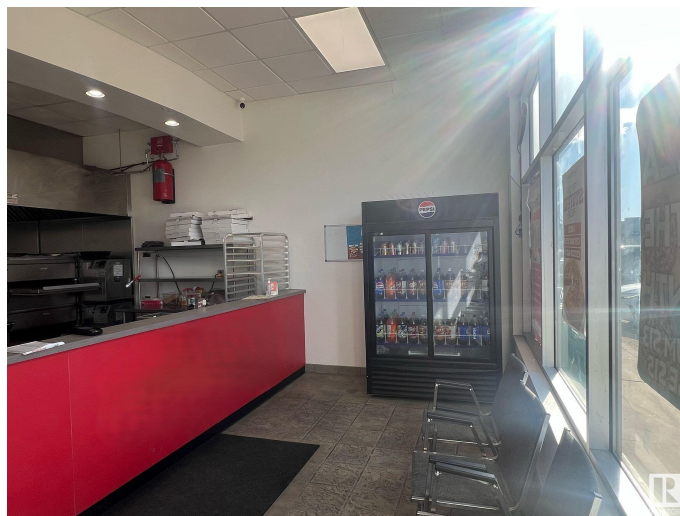
| | |
|-----------|-----------|
| MLS® # | E4425124 |
| Price | \$249,900 |
| Bathrooms | 0.00 |
| Acres | 0.00 |
| Type | Business |
| Status | Active |

Community Information

| | |
|-------------|-----------------------------|
| Address | N/A |
| Area | Spruce Grove |
| Subdivision | East Campsite Business Park |
| City | Spruce Grove |
| County | ALBERTA |
| Postal Code | X1X 1X1 |

Additional Information

| | |
|----------------|------------------|
| Date Listed | March 11th, 2025 |
| Days on Market | 36 |



DATA IS DEEMED RELIABLE BUT IS NOT GUARANTEED ACCURATE BY THE REALTORS® ASSOCIATION OF EDMONTON. COPYRIGHT 2025 BY THE REALTORS® ASSOCIATION OF EDMONTON. ALL RIGHTS RESERVED. Trademarks are owned or controlled by the Canadian Real Estate Association (CREA) and identify real estate professionals who are members of CREA (REALTOR®, REALTORS®) and/or the quality of services they provide (MLS®, Multiple Listing Service®)

Listing information last updated on April 16th, 2025 at 5:17am MDT