

# \$899,900 - 105 Jubilation Drive, St. Albert

MLS® #E4425129

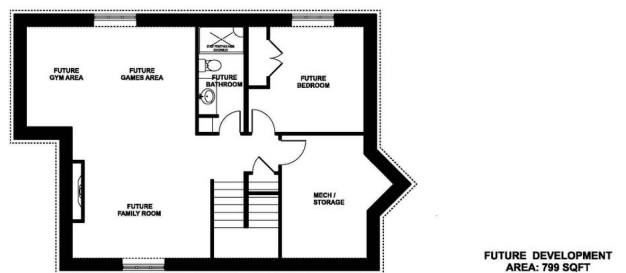
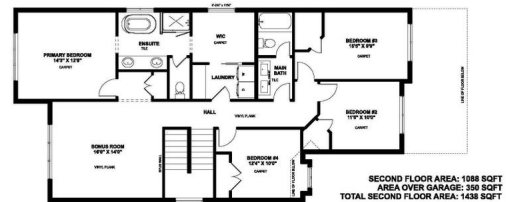
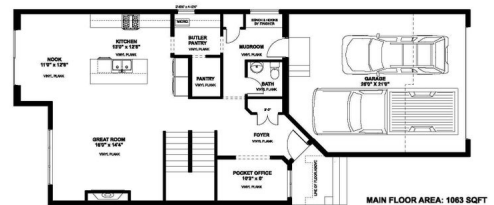
**\$899,900**

4 Bedroom, 2.50 Bathroom, 2,501 sqft  
Single Family on 0.00 Acres

Jensen Lakes, St. Albert, AB

Nestled in the beautiful community of Jensen Lakes, this stunning Sarasota built home is the perfect blend of luxury & convenience.

Spanning 2,500 sqft, this home boasts 4 bedrooms & 2.5 bathrooms, thoughtfully designed w/premium materials both inside & out. The main floor ft. an open-concept design, w/large windows flooding the great room w/natural light. The spacious kitchen & dining nook flow seamlessly, creating an ideal space for family gatherings. An office, pantry, & 2pc bath are also located on this level. Upstairs, a generous bonus room provides addâ€™™ living space. The primary is a true retreat, complete with a spa-inspired 5pc ensuite ft. freestanding tub & w/thru closet that leads to the laundry room. Three more spacious bedrooms share a 5pc bath. The basement is ready for customization, with potential for a rec room, 5th bedroom, & 4pc bath. As a resident of Jensen Lakes, you'll enjoy exclusive year-round access to fantastic amenities, incl. the lake for summer beach days & skating in winter.



Built in 2025

## Essential Information

MLS® # E4425129  
Price \$899,900

Bedrooms	4
Bathrooms	2.50
Full Baths	2
Half Baths	1
Square Footage	2,501
Acres	0.00
Year Built	2025
Type	Single Family
Sub-Type	Detached Single Family
Style	2 Storey
Status	Active

### **Community Information**

Address	105 Jubilation Drive
Area	St. Albert
Subdivision	Jensen Lakes
City	St. Albert
County	ALBERTA
Province	AB
Postal Code	T8N 7W7

### **Amenities**

Amenities	Carbon Monoxide Detectors, Ceiling 9 ft., Detectors Smoke, Exterior Walls- 2"x6", Lake Privileges, See Remarks, HRV System
Parking Spaces	4
Parking	Double Garage Attached

### **Interior**

Interior Features	ensuite bathroom
Appliances	Humidifier-Power(Furnace)
Heating	Forced Air-1, Natural Gas
Stories	2
Has Basement	Yes
Basement	Full, Unfinished

### **Exterior**

Exterior	Wood, Brick, Hardie Board Siding
Exterior Features	Beach Access, Schools, Shopping Nearby, See Remarks
Roof	Asphalt Shingles

Construction Wood, Brick, Hardie Board Siding  
Foundation Concrete Perimeter

### **Additional Information**

Date Listed March 11th, 2025

Days on Market 2

Zoning Zone 24

HOA Fees 500

HOA Fees Freq. Annually

DATA IS DEEMED RELIABLE BUT IS NOT GUARANTEED ACCURATE BY THE REALTORS® ASSOCIATION OF EDMONTON. COPYRIGHT 2025 BY THE REALTORS® ASSOCIATION OF EDMONTON. ALL RIGHTS RESERVED. Trademarks are owned or controlled by the Canadian Real Estate Association (CREA) and identify real estate professionals who are members of CREA (REALTOR®, REALTORS®) and/or the quality of services they provide (MLS®, Multiple Listing Service®)

Listing information last updated on March 13th, 2025 at 7:17pm MDT