

Courtesy Of Darcy Powlik Of RE/MAX Real Estate

\$1,299,000 - 48045 Rge Road 261, Rural Leduc County

MLS® #E4425143

\$1,299,000

5 Bedroom, 3.50 Bathroom, 1,877 sqft

Rural on 60.00 Acres

None, Rural Leduc County, AB

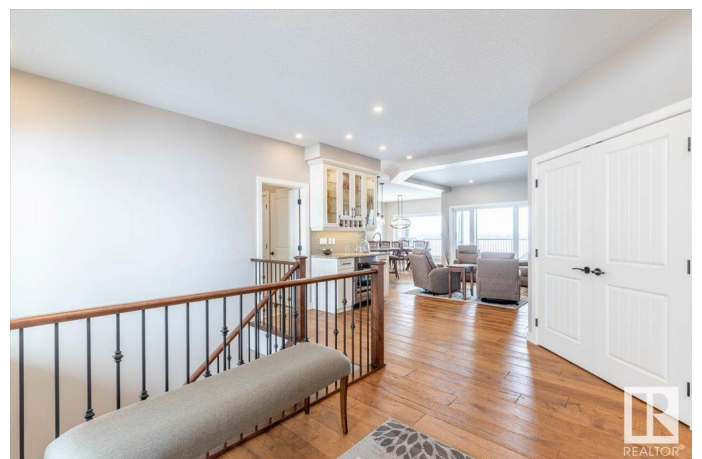
Beautiful Custom Built 1876 sq/ft home with a 42'x60' Shop situated on 60 Acres. Built in 2016 This home is immaculate along with the entire Property. The Main Floor hosts a gorgeous kitchen with granite countertops, lots of cabinets, a Wet Bar to match, and walk-through pantry. Open to the dining room with access to the raised deck, and to the living room with custom built-ins on either side of the gas fireplace with stone floor to ceiling. The Main Floor also has the Primary Bedroom with its own Walk-in Closet and 5 Piece Ensuite. Two more Bedrooms, a 4 piece Bathroom, 2 piece Bathroom, and Laundry Room conclude the main Level. The Walk-Out Basement hosts 2 more Bedrooms, a 4 piece Bathroom, Storage Room, Cold Room, and a Family Room that has its own Wet Bar, and Gas Fireplace. The Basement also has In-Floor Heat, and the entire home has Air Conditioning. Attached is a fully finished Triple Garage. This Property has to be viewed in person to appreciate its Beauty and Everything it holds!

Built in 2015

Essential Information

MLS® # E4425143

Price \$1,299,000



Bedrooms	5
Bathrooms	3.50
Full Baths	3
Half Baths	1
Square Footage	1,877
Acres	60.00
Year Built	2015
Type	Rural
Sub-Type	Detached Single Family
Style	Raised Bungalow
Status	Active

Community Information

Address	48045 Rge Road 261
Area	Rural Leduc County
Subdivision	None
City	Rural Leduc County
County	ALBERTA
Province	AB
Postal Code	T0C 1Z0

Amenities

Features	Air Conditioner, Bar, Deck, Parking-Extra, Walkout Basement, See Remarks, Natural Gas BBQ Hookup
----------	--

Interior

Interior Features	ensuite bathroom
Heating	Forced Air-1, In Floor Heat System, Natural Gas
Fireplace	Yes
Stories	2
Has Basement	Yes
Basement	Full, Finished

Exterior

Exterior	Wood
Exterior Features	See Remarks
Construction	Wood
Foundation	Concrete Perimeter

Additional Information

Date Listed March 11th, 2025

Days on Market 32

Zoning Zone 90

DATA IS DEEMED RELIABLE BUT IS NOT GUARANTEED ACCURATE BY THE REALTORS® ASSOCIATION OF EDMONTON. COPYRIGHT 2025 BY THE REALTORS® ASSOCIATION OF EDMONTON. ALL RIGHTS RESERVED. Trademarks are owned or controlled by the Canadian Real Estate Association (CREA) and identify real estate professionals who are members of CREA (REALTOR®, REALTORS®) and/or the quality of services they provide (MLS®, Multiple Listing Service®)

Listing information last updated on April 12th, 2025 at 4:02am MDT