

\$359,000 - 1502 10649 Saskatchewan Drive, Edmonton

MLS® #E4425246

\$359,000

2 Bedroom, 2.00 Bathroom, 1,049 sqft
Condo / Townhouse on 0.00 Acres

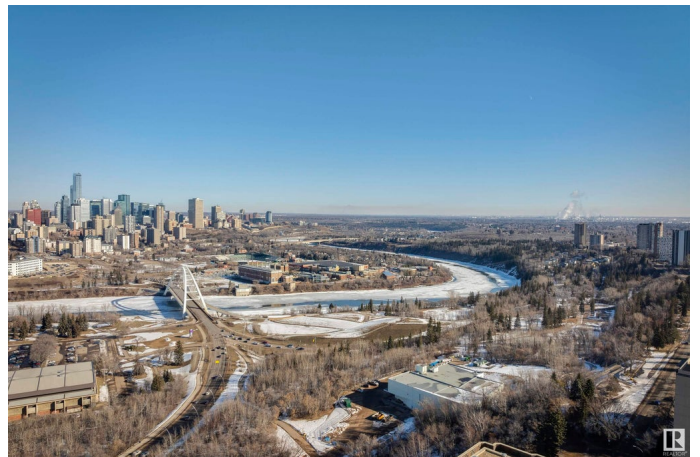
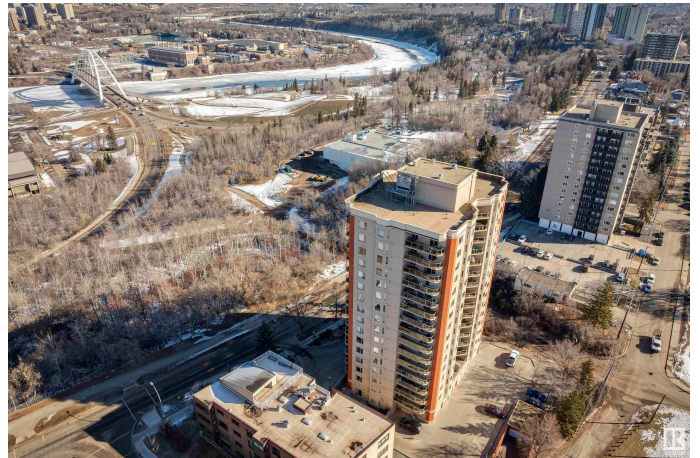
Strathcona, Edmonton, AB

Perched on the 15th floor, this stunning corner suite offers breathtaking panoramic views of the river valley and Edmonton's skyline, ideal for professionals working at the UofA or downtown. With west and north-facing windows, natural light fills the space throughout the day, creating a bright and inviting atmosphere. The well-designed layout ensures maximum privacy, with two spacious bedrooms placed on opposite sides. The primary suite features a beautiful west-facing view, a four-piece ensuite, and double closet. The second bedroom overlooks the river, complete with a walk-in closet and a full bath. Perfect for entertaining, the open-concept kitchen includes a breakfast bar, while the living area offers a cozy corner gas fireplace and access to a generous balcony with a gas BBQ hookup. Additional conveniences include in-suite laundry with storage, an underground parking stall, and a workout room in the building's lobby. So much potential for this suite in a quiet, well-managed building.

Built in 1999

Essential Information

MLS® #	E4425246
Price	\$359,000
Bedrooms	2



Bathrooms	2.00
Full Baths	2
Square Footage	1,049
Acres	0.00
Year Built	1999
Type	Condo / Townhouse
Sub-Type	Apartment High Rise
Style	Single Level Apartment
Status	Active

Community Information

Address	1502 10649 Saskatchewan Drive
Area	Edmonton
Subdivision	Strathcona
City	Edmonton
County	ALBERTA
Province	AB
Postal Code	T6E 6S8

Amenities

Amenities	Air Conditioner, Exercise Room, Parking-Visitor, Patio, Secured Parking, Security Door, Sprinkler System-Fire, Storage-In-Suite, Natural Gas BBQ Hookup
Parking	Parkade

Interior

Interior Features	ensuite bathroom
Appliances	Air Conditioning-Central, Dishwasher-Built-In, Garburator, Microwave Hood Fan, Refrigerator, Stacked Washer/Dryer, Stove-Electric
Heating	Heat Pump, Natural Gas
Fireplace	Yes
Fireplaces	Corner
# of Stories	17
Stories	1
Has Basement	Yes
Basement	None, No Basement

Exterior

Exterior	Concrete, Brick
----------	-----------------

Exterior Features	Golf Nearby, Park/Reserve, Playground Nearby, Public Swimming Pool, Public Transportation, River Valley View, Schools, Shopping Nearby, View Downtown, See Remarks
Roof	EPDM Membrane
Construction	Concrete, Brick
Foundation	Concrete Perimeter

Additional Information

Date Listed	March 12th, 2025
Days on Market	1
Zoning	Zone 15
Condo Fee	\$697

DATA IS DEEMED RELIABLE BUT IS NOT GUARANTEED ACCURATE BY THE REALTORS® ASSOCIATION OF EDMONTON. COPYRIGHT 2025 BY THE REALTORS® ASSOCIATION OF EDMONTON. ALL RIGHTS RESERVED. Trademarks are owned or controlled by the Canadian Real Estate Association (CREA) and identify real estate professionals who are members of CREA (REALTOR®, REALTORS®) and/or the quality of services they provide (MLS®, Multiple Listing Service®)

Listing information last updated on March 13th, 2025 at 9:18pm MDT