

\$487,500 - 2518 Yoho Inlet, Cold Lake

MLS® #E4426055

\$487,500

4 Bedroom, 3.50 Bathroom, 1,584 sqft

Single Family on 0.00 Acres

Parkview Estates (Cold Lake), Cold Lake, AB

Perfectly positioned near the hospital and just a few blocks from the standout Kinosoo Beach, this 4-bedroom, 3.5-bath home is a rare find. Unlike the typical Hailey design, it features a convenient master bedroom on the main floor and two additional bedrooms situated above the garage, offering a unique and practical layout. It's also larger than most Hailey's, providing ample space for a growing family. Storage is a standout feature, with extra-large closets and built-in organizers in every room to keep things tidy. Downstairs, the basement boasts in-slab heating, a massive family room and a recently completed bathroom with a full tile shower. Step outside to enjoy a durable composite deck paired with aluminum railings, designed for low-maintenance living so you can spend more time relaxing. Whether you need room for kids, guests, or a home office, this property delivers. Located in a prime spot with easy access to essentials, it's the family home you've been searching for!

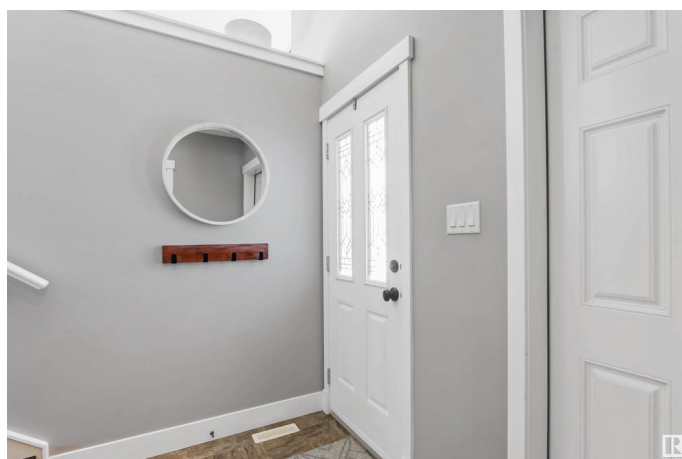
Built in 2014

Essential Information

MLS® # E4426055

Price \$487,500

Bedrooms 4



Bathrooms	3.50
Full Baths	3
Half Baths	1
Square Footage	1,584
Acres	0.00
Year Built	2014
Type	Single Family
Sub-Type	Detached Single Family
Style	Bi-Level
Status	Active

Community Information

Address	2518 Yoho Inlet
Area	Cold Lake
Subdivision	Parkview Estates (Cold Lake)
City	Cold Lake
County	ALBERTA
Province	AB
Postal Code	T9M 0K1

Amenities

Amenities	Deck
Parking Spaces	6
Parking	Double Garage Attached, Heated, Insulated

Interior

Interior Features	ensuite bathroom
Appliances	Dishwasher-Built-In, Dryer, Microwave Hood Fan, Refrigerator, Stove-Electric, Washer, Window Coverings
Heating	Forced Air-1, In Floor Heat System, Natural Gas
Stories	3
Has Basement	Yes
Basement	Full, Finished

Exterior

Exterior	Wood, Stone, Vinyl
Exterior Features	Corner Lot
Roof	Asphalt Shingles
Construction	Wood, Stone, Vinyl

Foundation Concrete Perimeter

Additional Information

Date Listed March 17th, 2025

Days on Market 34

Zoning Zone 60

DATA IS DEEMED RELIABLE BUT IS NOT GUARANTEED ACCURATE BY THE REALTORS® ASSOCIATION OF EDMONTON. COPYRIGHT 2025 BY THE REALTORS® ASSOCIATION OF EDMONTON. ALL RIGHTS RESERVED.Trademarks are owned or controlled by the Canadian Real Estate Association (CREA) and identify real estate professionals who are members of CREA (REALTOR®, REALTORS®) and/or the quality of services they provide (MLS®, Multiple Listing Service®)

Listing information last updated on April 20th, 2025 at 10:47am MDT