

\$769,900 - 1135 Gyrfalcon Crescent, Edmonton

MLS® #E4428619

\$769,900

4 Bedroom, 3.00 Bathroom, 2,406 sqft

Single Family on 0.00 Acres

Hawks Ridge, Edmonton, AB

Brand new build 2406 Sq Ft 2 storey home on a corner lot with a private and amazing location backing a quiet walking path, treeline and protected green space. This home has a open concept with 4 bedrooms upstairs with a beautiful ensuite bath with tub and enclosed modern glass shower and second floor laundry and also a large bonus room overlooking a modern concept main floor with high ceilings and modern finishing's. The home also features a SEPERATE SIDE ENTRANCE to basement with potential for a legal secondary suite. The main floor also has a office/Den area and a beautiful kitchen area with a extra butlers pantry/spice kitchen and large mud room off the back garage door and a full bath on the main. This home is amazing and provides perfect spaces for a growing family.

Built in 2025

Essential Information

MLS® #	E4428619
Price	\$769,900
Bedrooms	4
Bathrooms	3.00
Full Baths	3
Square Footage	2,406
Acres	0.00
Year Built	2025



Type Single Family
 Sub-Type Detached Single Family
 Style 2 Storey
 Status Active

Community Information

Address 1135 Gyrfalcon Crescent
 Area Edmonton
 Subdivision Hawks Ridge
 City Edmonton
 County ALBERTA
 Province AB
 Postal Code T5S 0S5

Amenities

Amenities Ceiling 9 ft., See Remarks
 Parking Spaces 4
 Parking Double Garage Attached

Interior

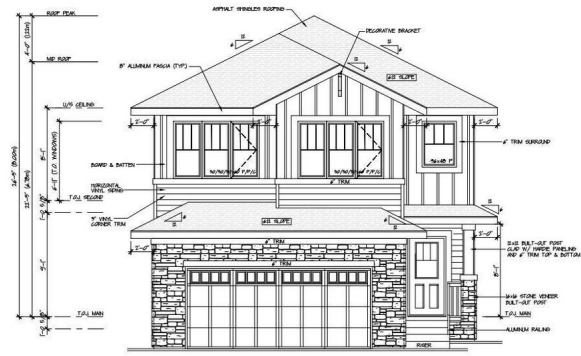
Interior Features ensuite bathroom
 Appliances See Remarks
 Heating Forced Air-1, Natural Gas
 Fireplace Yes
 Fireplaces Insert
 Stories 2
 Has Basement Yes
 Basement Full, Unfinished

Exterior

Exterior Wood, Vinyl
 Exterior Features Cul-De-Sac, See Remarks
 Roof Asphalt Shingles
 Construction Wood, Vinyl
 Foundation Concrete Perimeter

Additional Information

Date Listed April 2nd, 2025
 Days on Market 13



Front Elevation



DATA IS DEEMED RELIABLE BUT IS NOT GUARANTEED ACCURATE BY THE REALTORS® ASSOCIATION OF EDMONTON. COPYRIGHT 2025 BY THE REALTORS® ASSOCIATION OF EDMONTON. ALL RIGHTS RESERVED. Trademarks are owned or controlled by the Canadian Real Estate Association (CREA) and identify real estate professionals who are members of CREA (REALTOR®, REALTORS®) and/or the quality of services they provide (MLS®, Multiple Listing Service®)

Listing information last updated on April 15th, 2025 at 12:02am MDT