

\$389,900 - 3523 49a Street, Edmonton

MLS® #E4428641

\$389,900

3 Bedroom, 2.00 Bathroom, 1,169 sqft
Single Family on 0.00 Acres

Minchau, Edmonton, AB

****SOUTH**

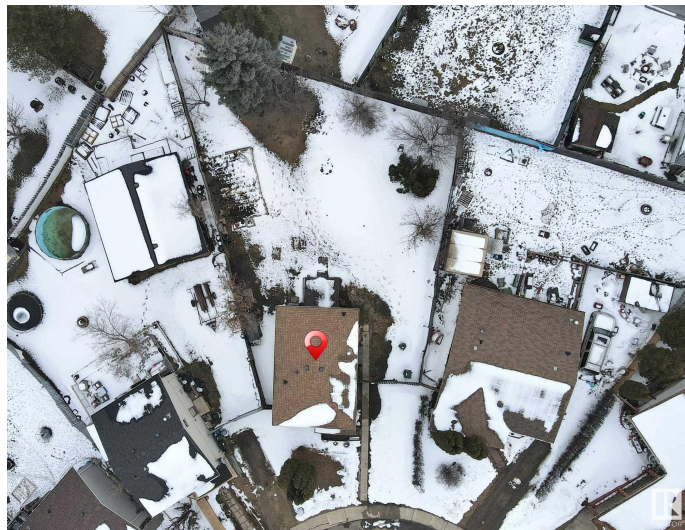
EDMONTONMILLWOODS**HUGE LOT**PARTLY FINISHED BASEMENT **SIDE ENTRY**** Main floor offers living area ,kitchen and dining area. moving upstairs house offers 3 bedroom and 4 piece washroom. side entry to basement and partly finished basement with 3 piece washroom. backyard is very big , good for kids to play. **GREAT INVESTMENT PROPERTY FOR INVESTORS AND FIRST TIME HOME BUYERS.**

Built in 1980

Essential Information

MLS® #	E4428641
Price	\$389,900
Bedrooms	3
Bathrooms	2.00
Full Baths	2
Square Footage	1,169
Acres	0.00
Year Built	1980
Type	Single Family
Sub-Type	Detached Single Family
Style	2 Storey
Status	Active

Community Information



Address	3523 49a Street
Area	Edmonton
Subdivision	Minchau
City	Edmonton
County	ALBERTA
Province	AB
Postal Code	T6L 3V8

Amenities

Amenities	Carbon Monoxide Detectors, Detectors Smoke
Parking	No Parking

Interior

Appliances	Dishwasher-Built-In, Dryer, Microwave Hood Fan, Oven-Built-In, Refrigerator, Stove-Electric, Washer
Heating	Forced Air-1, Natural Gas
Stories	2
Has Basement	Yes
Basement	Full, Unfinished

Exterior

Exterior	Wood, Stucco, Vinyl
Exterior Features	Airport Nearby, Playground Nearby, Public Transportation, Schools, Shopping Nearby
Roof	Asphalt Shingles
Construction	Wood, Stucco, Vinyl
Foundation	Concrete Perimeter

Additional Information

Date Listed	April 1st, 2025
Days on Market	7
Zoning	Zone 29

DATA IS DEEMED RELIABLE BUT IS NOT GUARANTEED ACCURATE BY THE REALTORS® ASSOCIATION OF EDMONTON. COPYRIGHT 2025 BY THE REALTORS® ASSOCIATION OF EDMONTON. ALL RIGHTS RESERVED. Trademarks are owned or controlled by the Canadian Real Estate Association (CREA) and identify real estate professionals who are members of CREA (REALTOR®, REALTORS®) and/or the quality of services they provide (MLS®, Multiple Listing Service®)

Listing information last updated on April 8th, 2025 at 8:02pm MDT