

Courtesy Of Tom M Allison Of Real Broker

\$339,900 - 4522 54 Avenue, Tofield

MLS® #E4429827

\$339,900

5 Bedroom, 2.50 Bathroom, 1,177 sqft

Single Family on 0.00 Acres

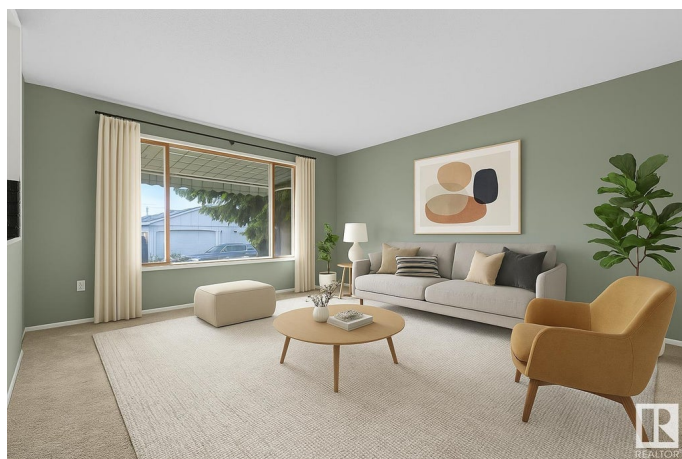
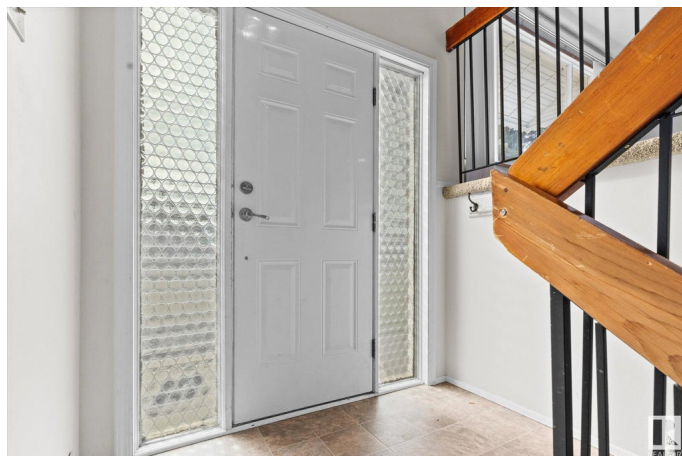
Tofield, Tofield, AB

Welcome to this spacious and well-maintained bi-level home in the heart of Tofield! With approximately 1,177 square feet of living space, this fully finished property offers comfort, functionality, and room for the whole family. Featuring 5 bedrooms, including a generous primary bedrom with its own 2-piece ensuite, this home is perfect for growing families or those who love to host. You'll appreciate the newer carpet and updated flooring throughout, adding a fresh and modern feel. Built with durable 2x6 fir lumber, this home offers lasting quality and solid construction. The detached double garage provides ample parking and storage, while the large fenced backyard is ideal for pets, kids, or summer BBQs. Located just steps from parks and schools, and within walking distance to the rodeo grounds and arena, youâ€™™ll love the small-town charm and community spirit that Tofield has to offer. Don't miss your chance to call this fantastic property home!

Built in 1983

Essential Information

MLS® #	E4429827
Price	\$339,900
Bedrooms	5
Bathrooms	2.50



Full Baths	2
Half Baths	1
Square Footage	1,177
Acres	0.00
Year Built	1983
Type	Single Family
Sub-Type	Detached Single Family
Style	Bi-Level
Status	Active

Community Information

Address	4522 54 Avenue
Area	Tofield
Subdivision	Tofield
City	Tofield
County	ALBERTA
Province	AB
Postal Code	T0B 4J0

Amenities

Amenities	See Remarks
Parking Spaces	4
Parking	Double Garage Detached

Interior

Interior Features	ensuite bathroom
Appliances	Dishwasher-Built-In, Refrigerator, Stove-Electric
Heating	Forced Air-1, Natural Gas
Stories	2
Has Basement	Yes
Basement	Full, Finished

Exterior

Exterior	Wood, Brick, Vinyl
Exterior Features	Fenced, Flat Site, Golf Nearby, Playground Nearby, Schools
Roof	Asphalt Shingles
Construction	Wood, Brick, Vinyl
Foundation	Concrete Perimeter

School Information

Elementary	C W Sears Elementary Schoo
Middle	Tofield School

Additional Information

Date Listed	April 9th, 2025
Days on Market	10
Zoning	Zone 80

DATA IS DEEMED RELIABLE BUT IS NOT GUARANTEED ACCURATE BY THE REALTORS® ASSOCIATION OF EDMONTON. COPYRIGHT 2025 BY THE REALTORS® ASSOCIATION OF EDMONTON. ALL RIGHTS RESERVED.Trademarks are owned or controlled by the Canadian Real Estate Association (CREA) and identify real estate professionals who are members of CREA (REALTOR®, REALTORS®) and/or the quality of services they provide (MLS®, Multiple Listing Service®)

Listing information last updated on April 19th, 2025 at 3:47am MDT