

Courtesy Of Stacy McIntyre Of Liv Real Estate

\$675,000 - 9543 146 Street, Edmonton

MLS® #E4430283

\$675,000

4 Bedroom, 2.00 Bathroom, 1,367 sqft
Single Family on 0.00 Acres

Crestwood, Edmonton, AB

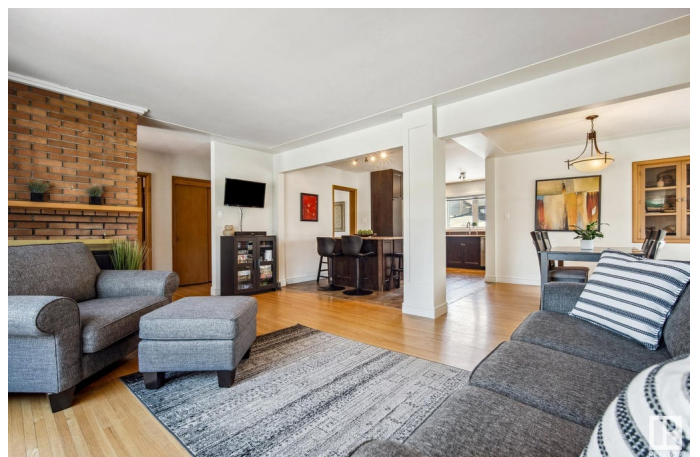
As you step inside this home, you'll be greeted by an open floor plan that seamlessly connects the living area to the dining room and kitchen. The kitchen has been meticulously renovated boasting modern appliances and finishes that will inspire culinary creativity. Adjacent to the kitchen, the dining and living areas offer ample space for both relaxation and entertaining. The house features three spacious bedrooms and a beautifully renovated bathrooms on the main floor that exude comfort and style. Downstairs, discover a finished basement - an ideal space for a variety of uses such as a recreation room, another bedroom a 3 piece bathroom & additional storage. Outside, enjoy the benefits of living on a large lot located on a quiet street. The generous outdoor space offers endless possibilities for landscaping and outdoor activities. Situated within walking distance to Crestwood School K-9, this location offers convenient access to quality education. This property is more than just a house; it's a lifestyle

Built in 1956

Essential Information

MLS® # E4430283

Price \$675,000



Bedrooms	4
Bathrooms	2.00
Full Baths	2
Square Footage	1,367
Acres	0.00
Year Built	1956
Type	Single Family
Sub-Type	Detached Single Family
Style	Bungalow
Status	Active

Community Information

Address	9543 146 Street
Area	Edmonton
Subdivision	Crestwood
City	Edmonton
County	ALBERTA
Province	AB
Postal Code	T5N 2Z2

Amenities

Amenities	No Smoking Home, Vinyl Windows
Parking	Double Garage Detached

Interior

Appliances	Dishwasher-Built-In, Dryer, Microwave Hood Fan, Refrigerator, Stove-Gas, Washer
Heating	Forced Air-1, Natural Gas
Stories	2
Has Basement	Yes
Basement	Full, Finished

Exterior

Exterior	Wood, Stucco
Exterior Features	Back Lane, Fenced, Flat Site, Fruit Trees/Shrubs, Landscaped, Paved Lane, Playground Nearby, Public Transportation, Schools, Shopping Nearby
Roof	Asphalt Shingles
Construction	Wood, Stucco

Foundation Concrete Perimeter

School Information

Elementary Crestwood Elementary

Middle Crestwood Elementary

High Ross Sheppard School

Additional Information

Date Listed April 11th, 2025

Days on Market 3

Zoning Zone 10

DATA IS DEEMED RELIABLE BUT IS NOT GUARANTEED ACCURATE BY THE REALTORS® ASSOCIATION OF EDMONTON. COPYRIGHT 2025 BY THE REALTORS® ASSOCIATION OF EDMONTON. ALL RIGHTS RESERVED. Trademarks are owned or controlled by the Canadian Real Estate Association (CREA) and identify real estate professionals who are members of CREA (REALTOR®, REALTORS®) and/or the quality of services they provide (MLS®, Multiple Listing Service®)

Listing information last updated on April 13th, 2025 at 10:17pm MDT