

\$596,800 - 475 Ainslie Crescent, Edmonton

MLS® #E4432950

\$596,800

4 Bedroom, 3.00 Bathroom, 2,135 sqft
Single Family on 0.00 Acres

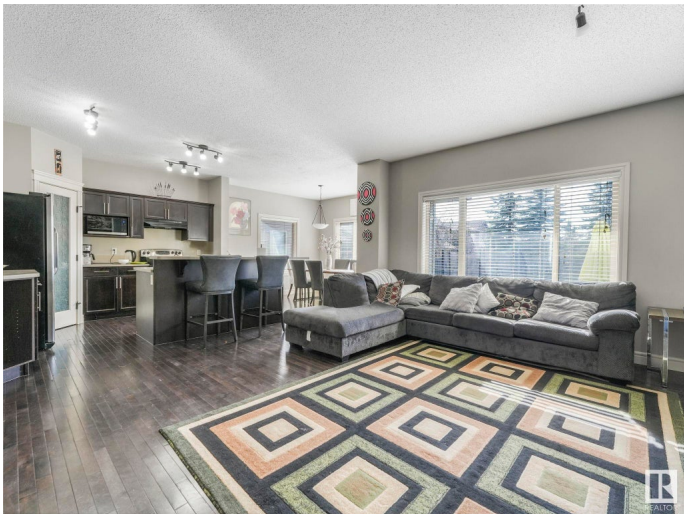
Ambleside, Edmonton, AB

Welcome to this stunning family home nestled in the prestigious community of Ambleside! Offering nearly 3,000 sq ft of beautifully finished living space, this 4-bedroom, 4-bathroom home is perfect for growing or large families. The open-concept main floor features a spacious living room with a cozy fireplace, a separate dining nook, and convenient main floor laundry. Upstairs you'll find a bright bonus room over the garage, three generously sized bedrooms, and two full bathrooms. The fully finished basement offers even more space with a large recreation area, an additional bedroom, and additional bathroom – ideal for guests, teens, or extended family. Complete with a double attached garage, fully finished landscaping, and a fenced backyard – a safe and private space where the kids can play freely. Located just steps away from a vibrant shopping district, multiple schools, recreation facilities, and public transit.

Built in 2010

Essential Information

MLS® #	E4432950
Price	\$596,800
Bedrooms	4
Bathrooms	3.00



Full Baths	2
Half Baths	2
Square Footage	2,135
Acres	0.00
Year Built	2010
Type	Single Family
Sub-Type	Detached Single Family
Style	2 Storey
Status	Active

Community Information

Address	475 Ainslie Crescent
Area	Edmonton
Subdivision	Ambleside
City	Edmonton
County	ALBERTA
Province	AB
Postal Code	T6W 0H7

Amenities

Amenities	On Street Parking, Detectors Smoke, Hot Water Natural Gas, Vinyl Windows
Parking Spaces	4
Parking	Double Garage Attached

Interior

Interior Features	ensuite bathroom
Appliances	Dishwasher-Built-In, Dryer, Garage Control, Garage Opener, Hood Fan, Refrigerator, Stove-Electric, Washer, Window Coverings
Heating	Forced Air-1, Natural Gas
Fireplace	Yes
Fireplaces	Mantel, Tile Surround
Stories	3
Has Basement	Yes
Basement	Full, Finished

Exterior

Exterior	Wood, Vinyl
Exterior Features	Fenced, Flat Site, Golf Nearby, Landscaped, No Back Lane, Playground

Nearby, Public Transportation, Schools, Shopping Nearby

Roof	Asphalt Shingles
Construction	Wood, Vinyl
Foundation	Concrete Perimeter

School Information

Elementary	Const. Daniel Woodall
Middle	Dr. Margaret Ann Armour
High	Lillian Osborne School

Additional Information

Date Listed	April 25th, 2025
Days on Market	4
Zoning	Zone 56

DATA IS DEEMED RELIABLE BUT IS NOT GUARANTEED ACCURATE BY THE REALTORS® ASSOCIATION OF EDMONTON. COPYRIGHT 2025 BY THE REALTORS® ASSOCIATION OF EDMONTON. ALL RIGHTS RESERVED. Trademarks are owned or controlled by the Canadian Real Estate Association (CREA) and identify real estate professionals who are members of CREA (REALTOR®, REALTORS®) and/or the quality of services they provide (MLS®, Multiple Listing Service®)

Listing information last updated on April 29th, 2025 at 8:32am MDT